



# MONTHLY MEMBERSHIP PROGRESS REPORT

District 201V2

Results as of: 02/28/2019

GMT: ANN ELDRIDGE

LOCATION AUSTRALIA

GMT CA

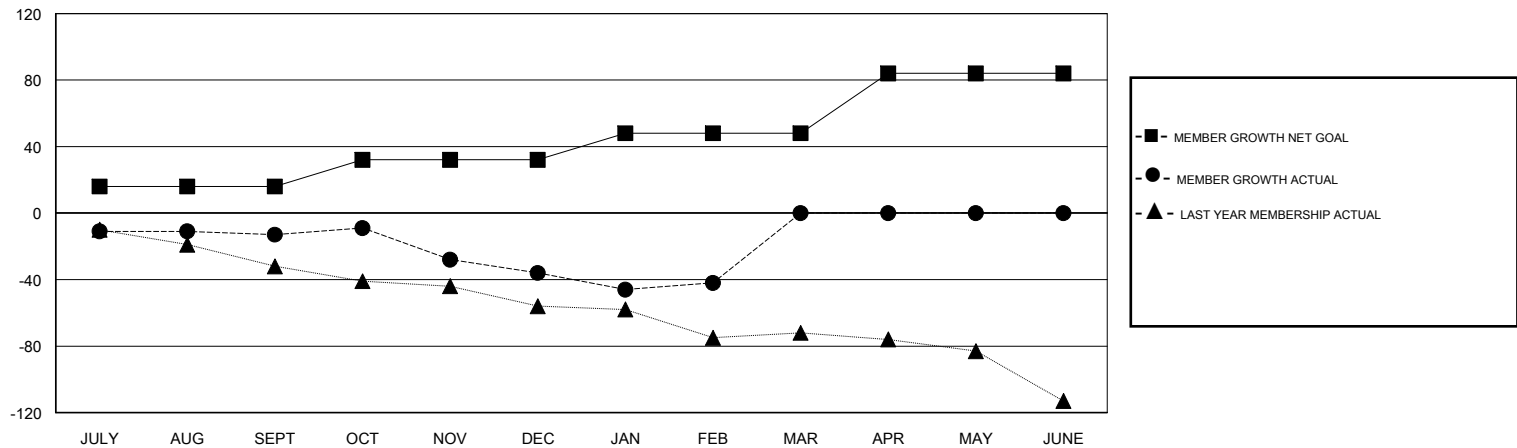
Clubs			
RESULTS FOR 2018-2019			
QUARTER	NEW CLUB GOAL	NEW CLUBS	DROPPED CLUBS
JULY/AUG/SEPT	0	0	1
OCT/NOV/DEC	0	0	0
JAN/FEB/MAR	0	0	1
APR/MAY/JUNE	1	0	0

Members			
RESULTS FOR 2018-2019			
QUARTER	MEMBER GROWTH NET GOAL	MEMBER GROWTH ACTUAL	DROPPED MEMBERS ACTUAL (including transfers)
JULY/AUG/SEPT	16	27	38
OCT/NOV/DEC	16	43	61
JAN/FEB/MAR	16	19	23
APR/MAY/JUNE	36	0	0

GOALS AND ACTUAL NEW CLUBS CUMULATIVE



GOALS AND ACTUAL MEMBERS CUMULATIVE



DROPPED CLUBS: 2	36 CLUBS OF 70 ADDED 1 OR MORE NEW MEMBERS	<u>GENDER DISTRIBUTION</u> MALE 1,031 (65.54%) FEMALE 542 (34.46%) Women Percentage Fiscal Year Goal: 36%
<u>DROPPED MEMBERS</u> DECEASED 16 CLUB CANCELLED 0 OTHER 104 TOTAL 120	<a href="#">CLICK HERE FOR CUMULATIVE MEMBERSHIP DATA</a>	TOTAL FAMILY UNIT MEMBERS 251 FAMILY MEMBERS PAYING HALF DUES 126